



Concrete Seal
WATERPROOFING & REMEDIAL
EST 1996



Toowoomba Second Range Crossing

Cross Drainage Culvert Remediation



The Scope

The Project

Cross Drainage Culvert Remediation

Site: Toowoomba Second Range Crossing

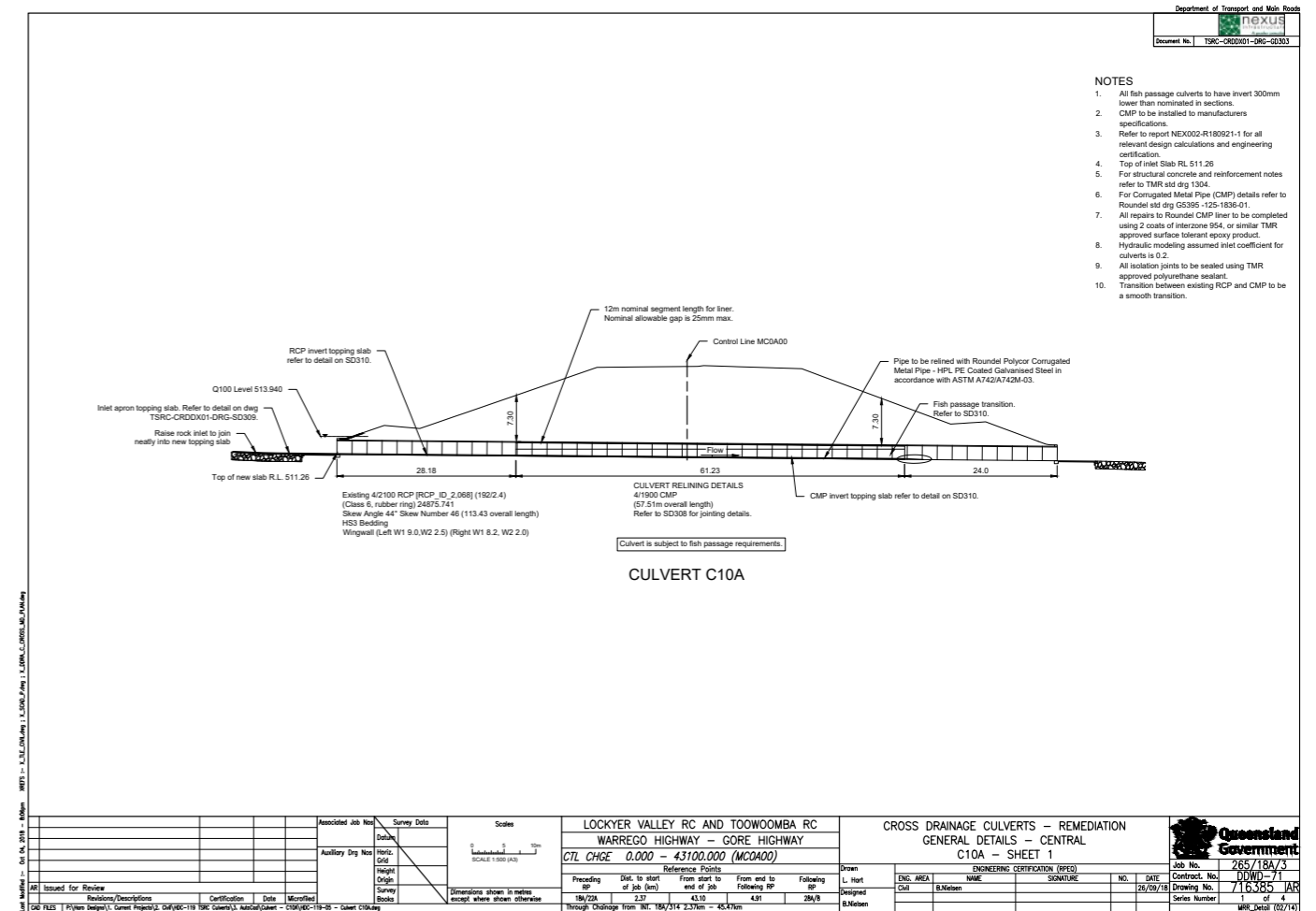
Client: Humes - Nexus Delivery

The Toowoomba Second Range Crossing is a 41 km heavy vehicle bypass route to the north of Toowoomba. When finished, it will connect the Warrego Highway at Helidon Spa in the east to the Gore Highway at Athol in the west via Charlton.

The project is the largest Australian Government commitment to a single road project in Queensland's history and will ensure freight efficiencies, and significantly improve driver safety and community amenity by removing heavy vehicles from Toowoomba's CBD.

As the centrepiece of major economic development taking place in south-western Queensland, the road will create a safer, faster and more efficient route for connecting freight to major ports and markets.

The outcome sought by the Client was to remediate the joints in the concrete pipe drains.



- Prep the joints to be repaired by mechanical grinding
- Install open cell backing rod to voids
- Apply 2 component gap filling Epoxy Resin Adhesive Paste
- Trowel off smooth to match original profile
- Comply with site specific safety and plant requirements







Concrete Seal

WATERPROOFING & REMEDIAL

info@concreteseal.com.au

07 3806 2904

Unit 42/17 Cairns Street

Loganholme QLD 4129

ABN: 39 083 213 601

www.concreteseal.com.au



Proud Member

Concrete Seal Pty Ltd

QBCC Act Licence No: 81995